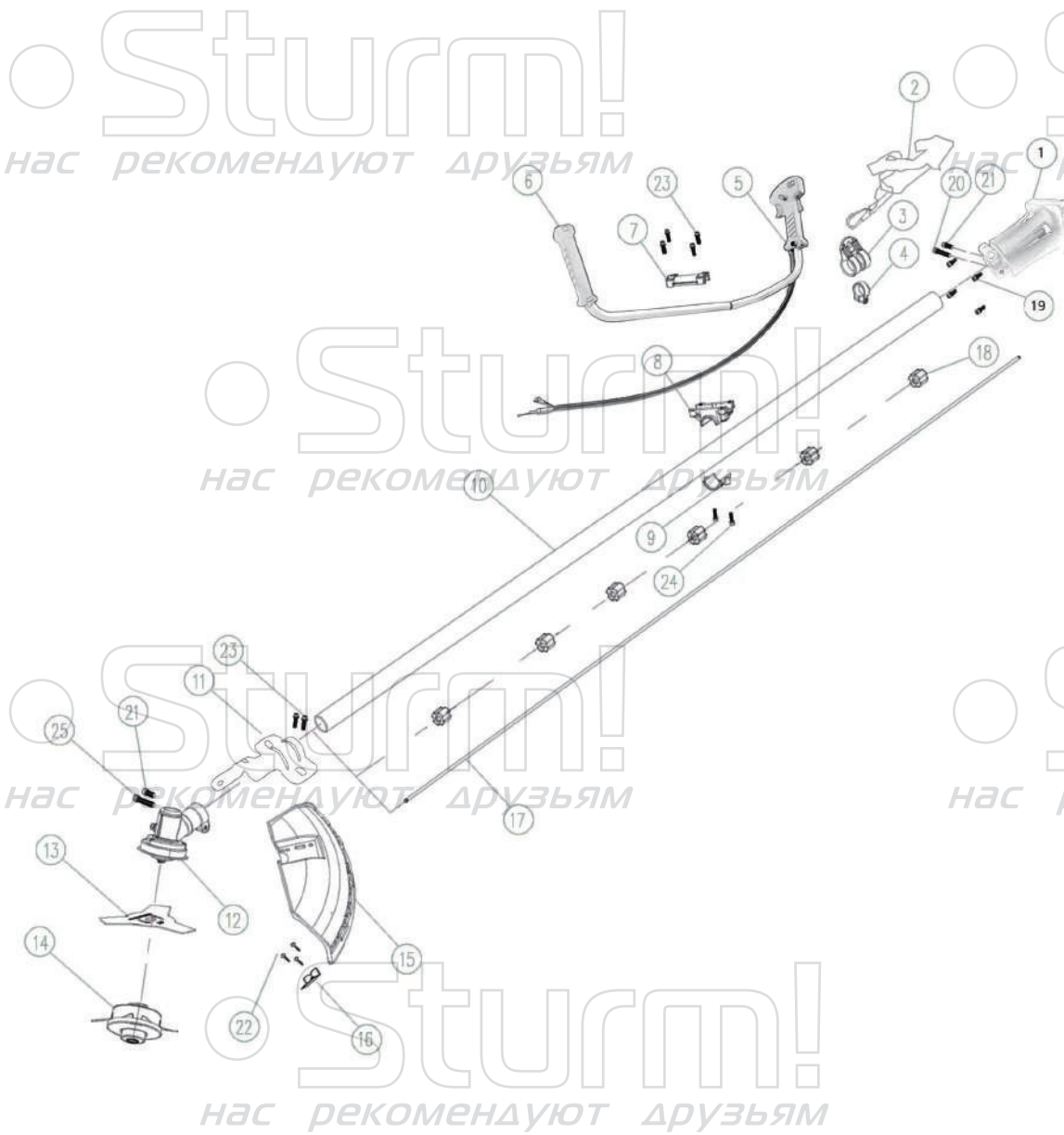


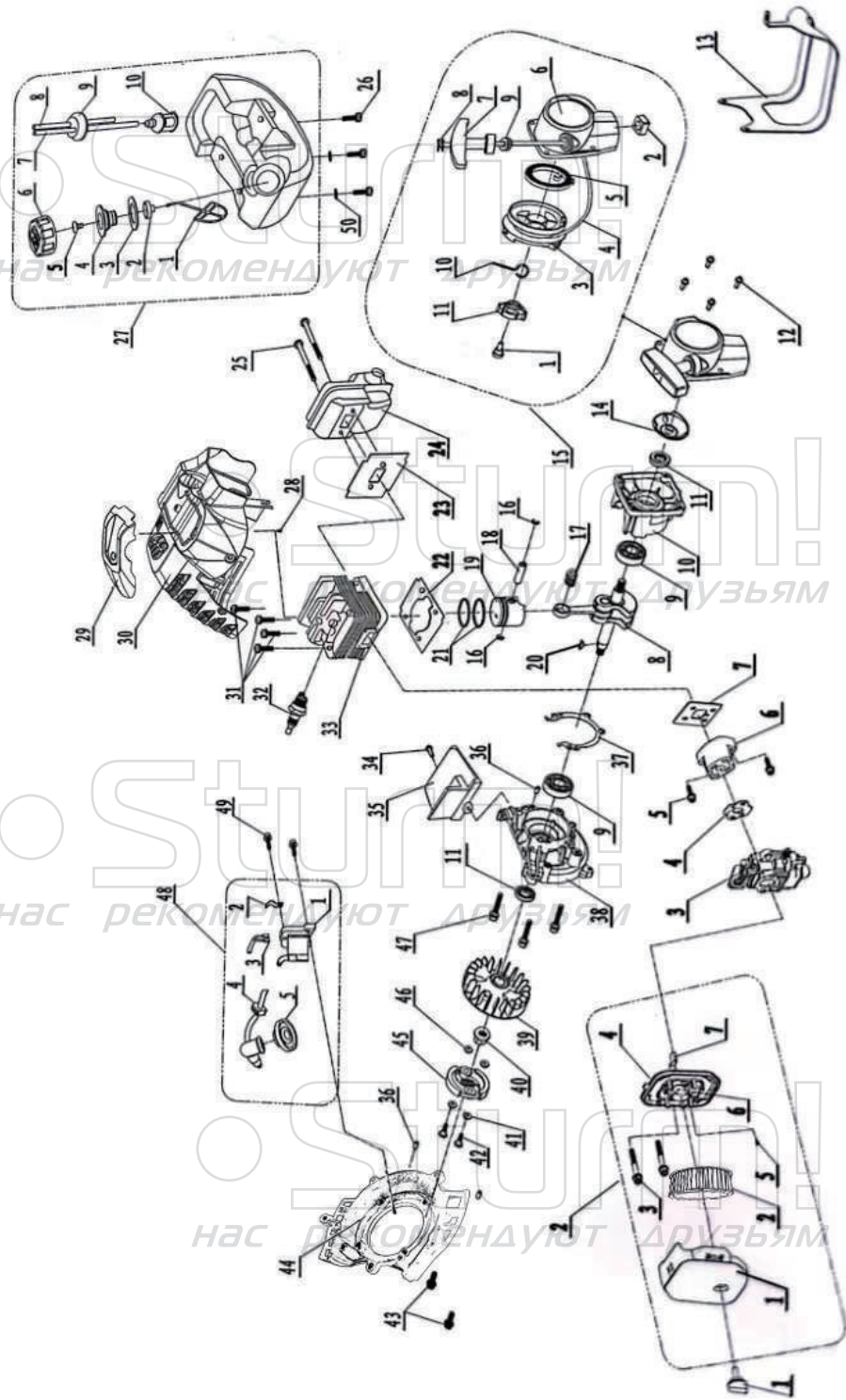
BT9526

| NO. | DESCRIPTION |
|-----|--------------------------|
| 1 | CONNECTING DISC ASSEMBLY |
| 2 | HARNESS ASSY |
| 3 | HARNESS CLAMP |
| 4 | CLAMP |
| 5 | LEVER ASSY |
| 6 | HANDLE |
| 7 | CAP UPPER |
| 8 | BRACKER |
| 9 | CAP LOWER |
| 10 | ALUMINIUM PIPE |
| 11 | CONNECT PLATE |
| 12 | GEARBOX ASSY |
| 13 | BLADE |
| 14 | LINE PACK |
| 15 | GUARD |
| 16 | SMALL BLADE |
| 17 | STRAIGHT SHAFT |
| 18 | BUSH |
| 19 | SCREW M6X20 |
| 20 | SCREW M6X25 |
| 21 | SCREW M5X14 |
| 22 | SCREW ST4.2X14 |
| 23 | SCREW M5X25 |
| 24 | SCREW M5X25 |
| 25 | SCREW M6X25 |

BT9526-EX-PS-ST22001



ENGINE FOR BT9526



| NO. | DESCRIPTION | NO. | DESCRIPTION |
|-------|----------------------|-------|----------------------|
| 1 | NUT | 25 | SCREW |
| 2 | AIR FILTER ASSY | 26 | SCREW |
| 2-1 | AIR FILTER COVER | 27 | TANK |
| 2-2 | SPONGE | 27-1 | CAP TETAINER |
| 2-3 | SCREW | 27-2 | RACQUET |
| 2-4 | CARBURETOR HOLDER | 27-3 | SEALING RING |
| 2-5 | SCREW | 27-4 | CHECK VALVE SEAT |
| 2-6 | CHOKE | 27-5 | CHECK VALVE |
| 2-7 | CHOKE HANDLE | 27-6 | OIL CAP |
| 3 | CARBURETOR | 27-7 | INTO PIPE |
| 4 | GASKET | 27-8 | RETURN PIPE |
| 5 | SCREW | 27-9 | TUBE SEAT |
| 6 | INLET PIPE | 27-10 | FUEL FILTER |
| 7 | GASKET | 28 | SCREW |
| 8 | CRANKSHAFT ASSY | 29 | TOP COVER |
| 9 | BEARING6001 | 30 | ENGINE COVER |
| 10 | RIGHTCRANKSHAFT CASE | 31 | SCREW |
| 11 | OIL SEAL12*22*7 | 32 | SPARK PLUG |
| 12 | SCREW | 33 | CYLINDER |
| 13 | TANK PROTECTOR | 34 | SCREW |
| 14 | DRIVING PLATE | 35 | SHIELD |
| 15 | STARTER ASSY | 36 | PIN |
| 15-1 | SCREW | 37 | GASKET |
| 15-2 | NUT | 38 | LEFT CRANKSHAFT CASE |
| 15-3 | WHEEL | 39 | FLYING WHEEL |
| 15-4 | ROPE | 40 | NUT |
| 15-5 | SPRING | 41 | SHIM |
| 15-6 | COVER | 42 | SCREW |
| 15-7 | HANDLE | 43 | SCREW |
| 15-8 | ROPE CLAMP | 44 | SIDE COVER |
| 15-9 | ROPE SLEEVE | 45 | CLUTCH ASSY |
| 15-10 | SMALL SRPRING | 46 | SHIM |
| 15-11 | CLAW | 47 | SCREW |
| 16 | PISTON PIN RING | 48 | COIL ASSY |
| 17 | BEARING | 48-1 | COIL |
| 18 | PISTON PIN | 48-2 | CORD GASKET |
| 19 | PISTON | 48-3 | OFF LINE |
| 20 | WOODRUFF KEY | 48-4 | CORD GROMMET |
| 21 | PISTON RING | 48-5 | SPARK PLUG CAP |
| 22 | GASKET | 49 | SCREW |
| 23 | GASKET | 50 | WASHER |
| 24 | MUFFLER | | |